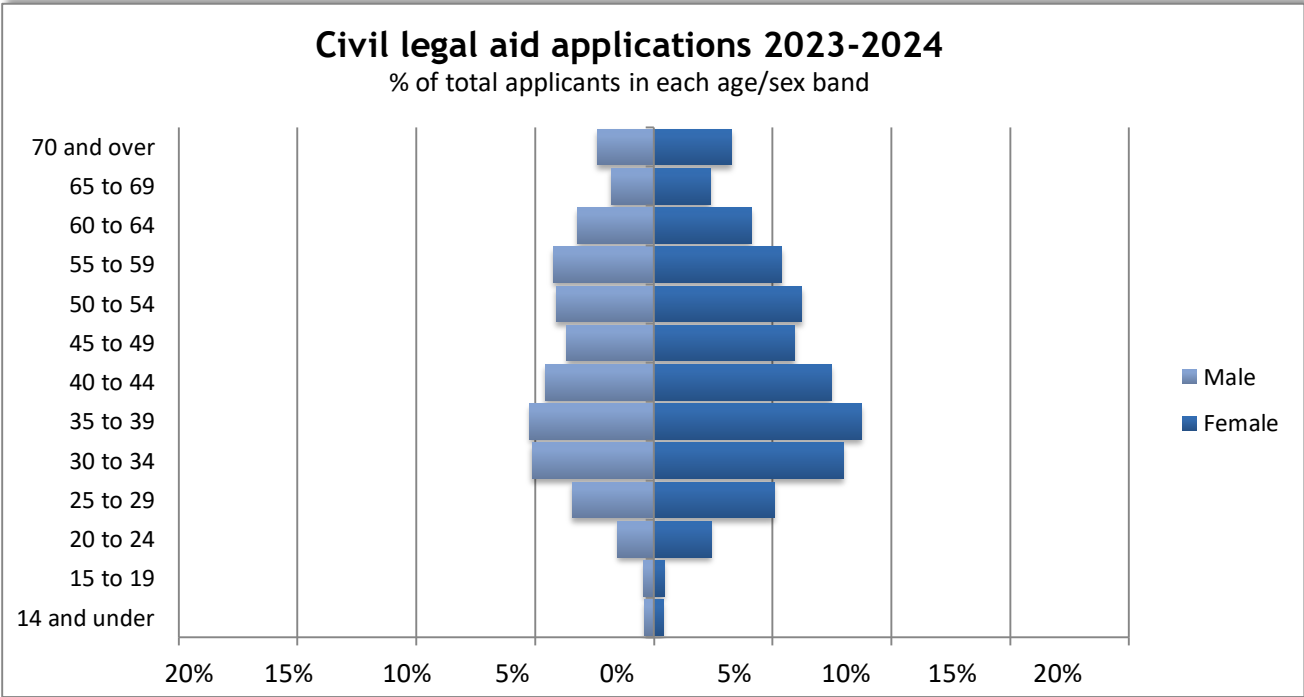




7. Age and sex profiles of legal aid applications

7.1 Civil legal aid applications

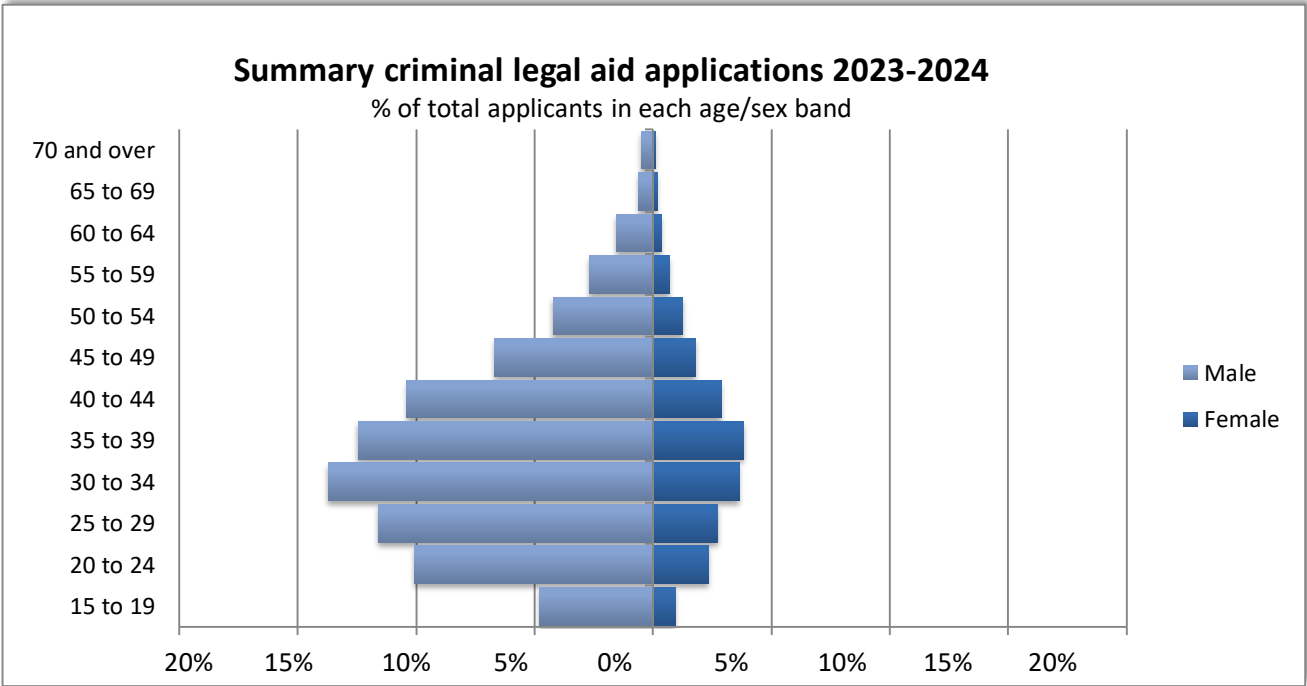


Age at Application	Female	Male	% in age band
14 and under	0%	0%	1%
15 to 19	0%	0%	1%
20 to 24	2%	2%	4%
25 to 29	5%	3%	9%
30 to 34	8%	5%	13%
35 to 39	9%	5%	14%
40 to 44	7%	5%	12%
45 to 49	6%	4%	10%
50 to 54	6%	4%	10%
55 to 59	5%	4%	10%
60 to 64	4%	3%	7%
65 to 69	2%	2%	4%
70 and over	3%	2%	6%
TOTAL	60%	40%	100%

Civil Legal aid has slightly more women (60%) than men (40%).
There is not much difference between the age of men and women both averaging into their mid-forties.
It is by far the oldest of the case types studied as all the other Case Types are in their mid-thirties.



7.2 Summary criminal legal aid applications

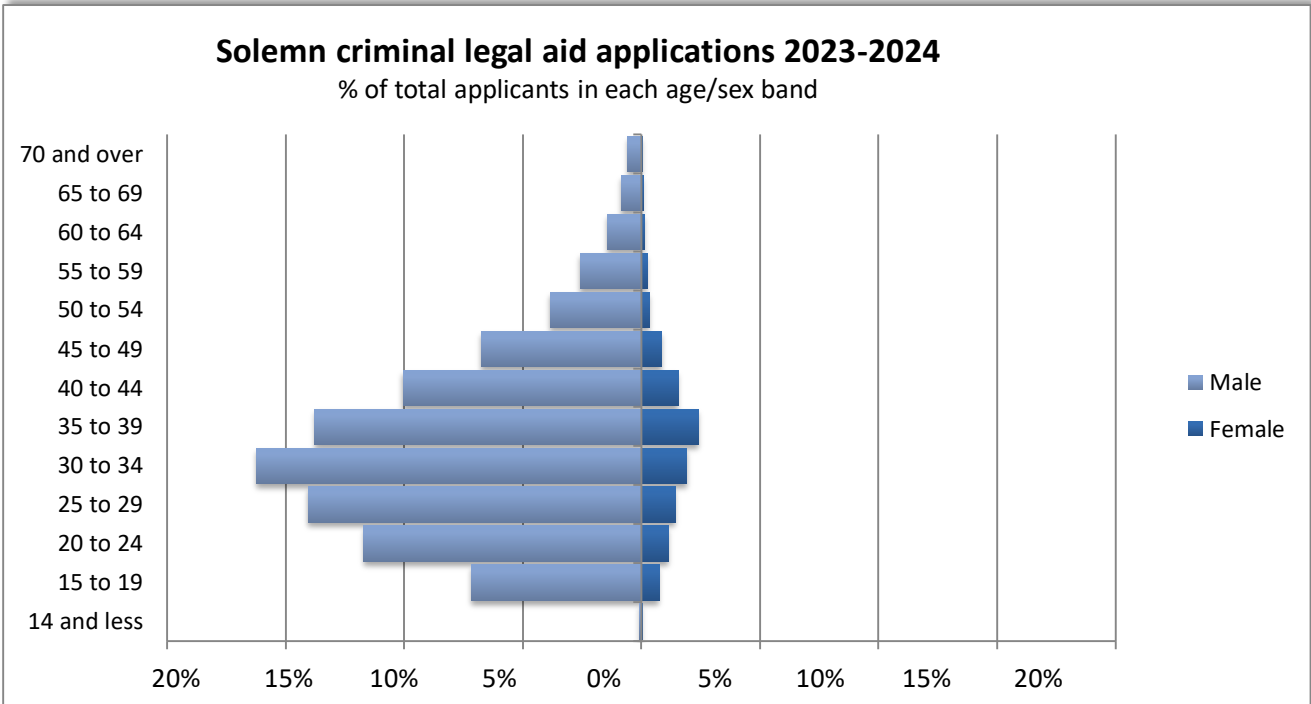


Age at Application	Female	Male	% in age band
15 to 19	1%	5%	6%
20 to 24	2%	10%	12%
25 to 29	3%	12%	14%
30 to 34	4%	14%	17%
35 to 39	4%	12%	16%
40 to 44	3%	10%	13%
45 to 49	2%	7%	8%
50 to 54	1%	4%	5%
55 to 59	1%	3%	3%
60 to 64	0%	2%	2%
65 to 69	0%	1%	1%
70 and over	0%	0%	1%
TOTAL	21%	79%	100%

Summary Criminal is heavily skewed Male at 80%
There is little difference between the age groups of male and female peaking around 35
There is almost no difference between Criminal Summary and ABWOR.
Solemn is slightly more skewed towards men at 89% but everything else is very similar.



7.3 Solemn criminal legal aid applications



Age at Application	Female	Male	% in age band
14 and under	0%	0%	0%
15 to 19	1%	7%	8%
20 to 24	1%	12%	13%
25 to 29	1%	14%	15%
30 to 34	2%	16%	18%
35 to 39	2%	14%	16%
40 to 44	2%	10%	12%
45 to 49	1%	7%	8%
50 to 54	0%	4%	4%
55 to 59	0%	3%	3%
60 to 64	0%	1%	2%
65 to 69	0%	1%	1%
70 and over	0%	1%	1%
TOTAL	11%	89%	100%

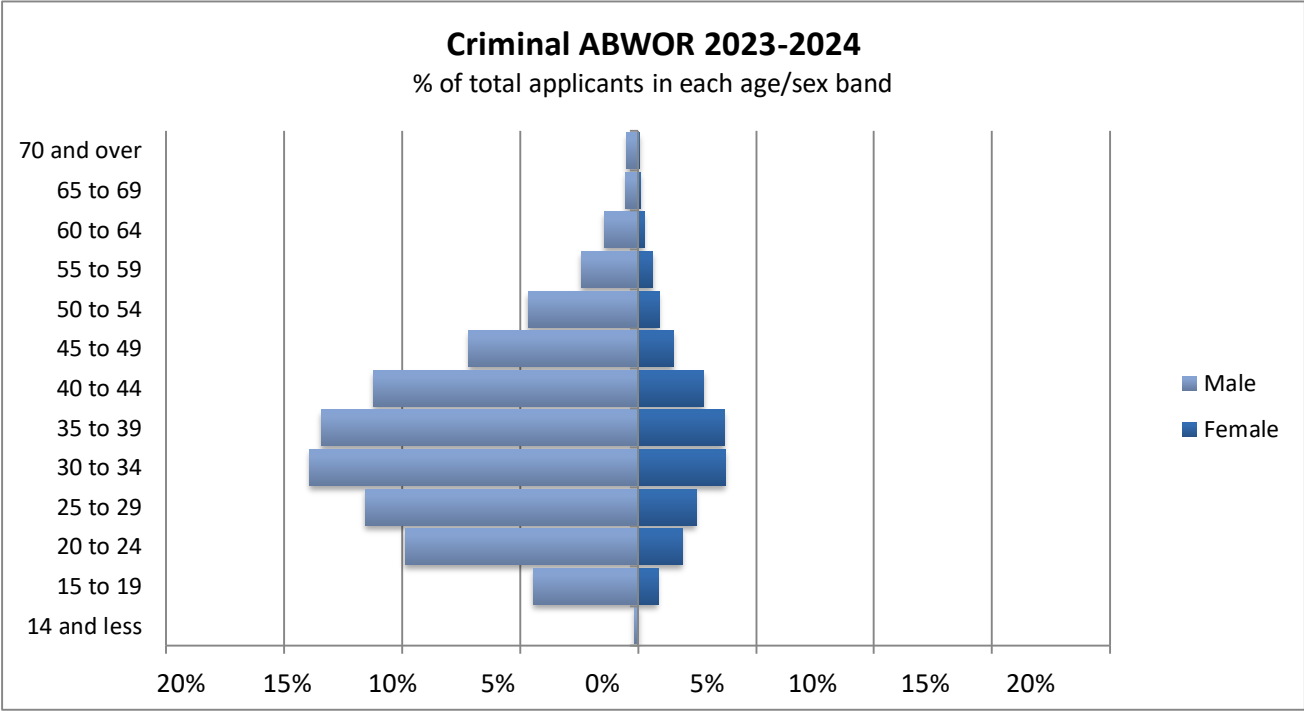
Note

1. Excludes automatic court grants and contempt of court applications.

Criminal Solemn is 90% male and women are on average two years older than the men.
It is very similar in makeup to Criminal ABWOR and Summary except it has an addition 10% men.



7.4 Criminal ABWOR

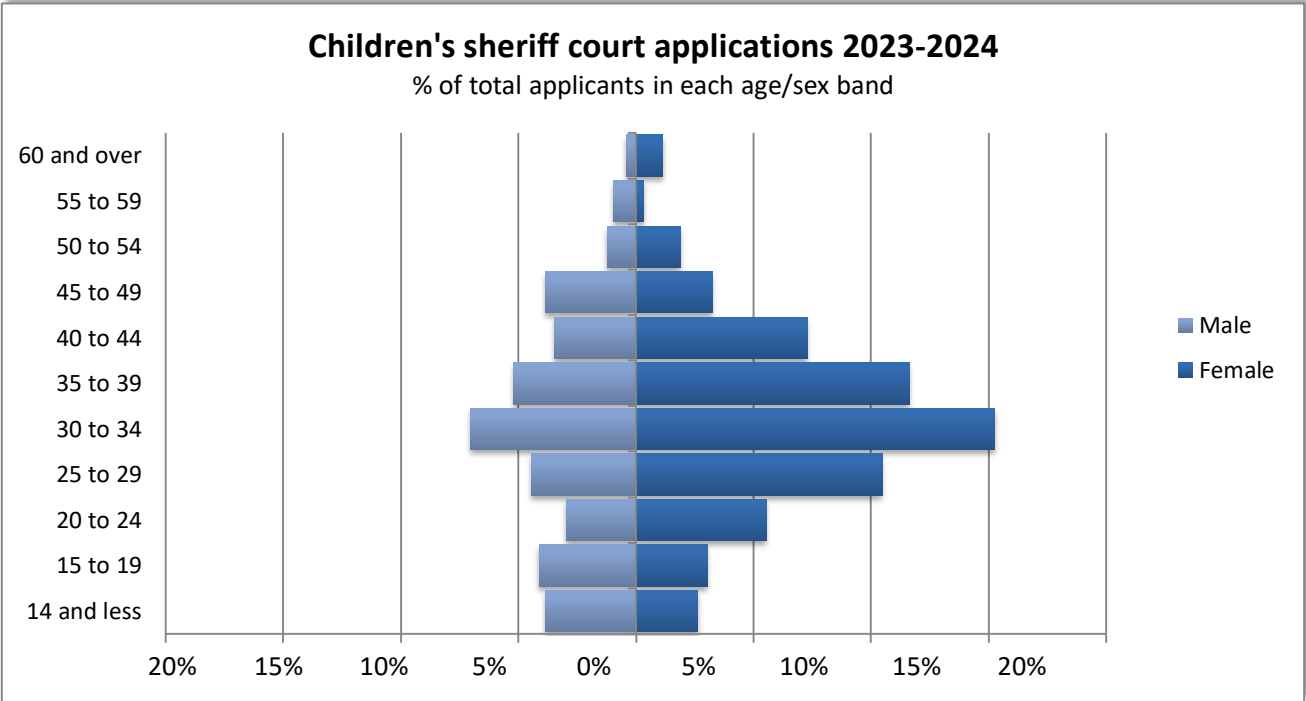


Age at Application	Female	Male	% in age band
14 and under	0%	0%	0%
15 to 19	1%	4%	5%
20 to 24	2%	10%	12%
25 to 29	2%	12%	14%
30 to 34	4%	14%	18%
35 to 39	4%	13%	17%
40 to 44	3%	11%	14%
45 to 49	1%	7%	9%
50 to 54	1%	5%	6%
55 to 59	1%	2%	3%
60 to 64	0%	1%	2%
65 to 69	0%	1%	1%
70 and over	0%	0%	1%
TOTAL	19%	81%	100%

Criminal Solemn is 80% male and there is little difference between the men and women’s ages averaging 35. It follows the same trends as Criminal Solemn and ABWOR.



7.5 Children's sheriff court applications

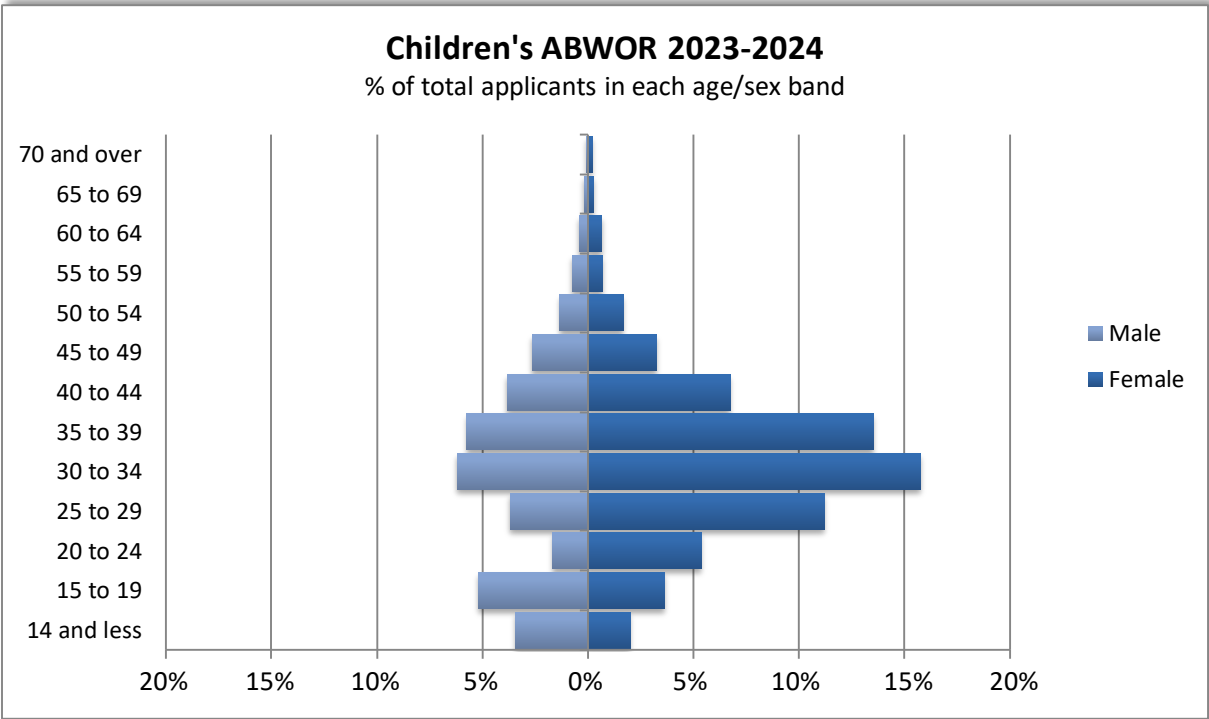


Age at Application	Female	Male	% in age band
14 and under	3%	4%	6%
15 to 19	3%	4%	7%
20 to 24	6%	3%	9%
25 to 29	10%	4%	15%
30 to 34	15%	7%	22%
35 to 39	12%	5%	17%
40 to 44	7%	3%	11%
45 to 49	3%	4%	7%
50 to 54	2%	1%	3%
55 to 59	0%	1%	1%
60 and over	1%	0%	2%
TOTAL	63%	38%	100%

Children’s Sheriff is weighted slightly towards women and is also the youngest for Case type
There is no difference between the average ages for men and women.



7.6 Children's ABWOR

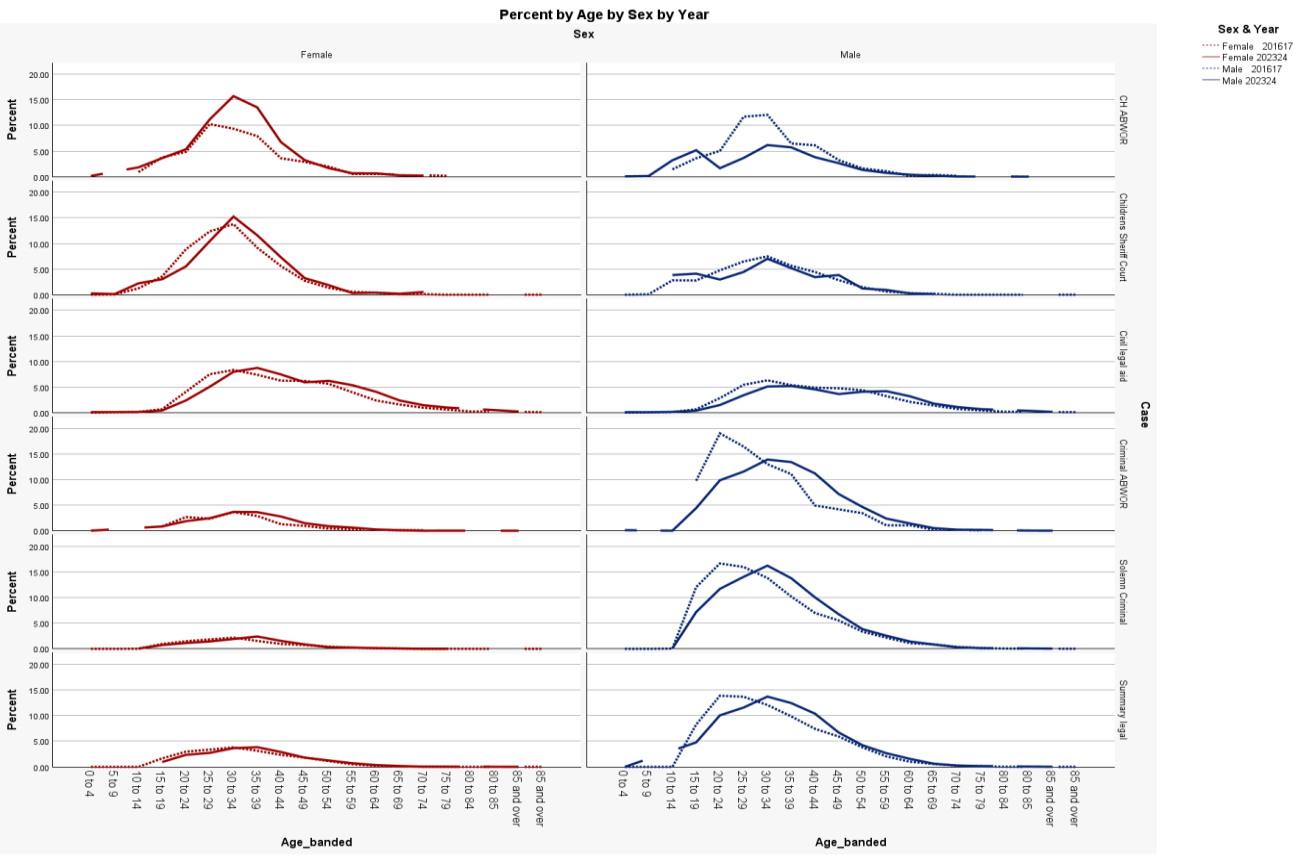


Age at Application	Female	Male	% in age band
14 and under	2%	3%	5%
15 to 19	4%	5%	9%
20 to 24	5%	2%	7%
25 to 29	11%	4%	15%
30 to 34	16%	6%	22%
35 to 39	14%	6%	19%
40 to 44	7%	4%	11%
45 to 49	3%	3%	6%
50 to 54	2%	1%	3%
55 to 59	1%	1%	1%
60 to 64	1%	0%	1%
65 to 69	0%	0%	0%
70 to 74	0%	0%	0%
TOTAL	65%	35%	100%

It is worth nothing that ABWOR follows the same trends as Sheriff Court.



7.7 2022/2023 2023/2024 Age Sex Comparison



7.8 Age Sex by Case Type Comparison

