

Section 2

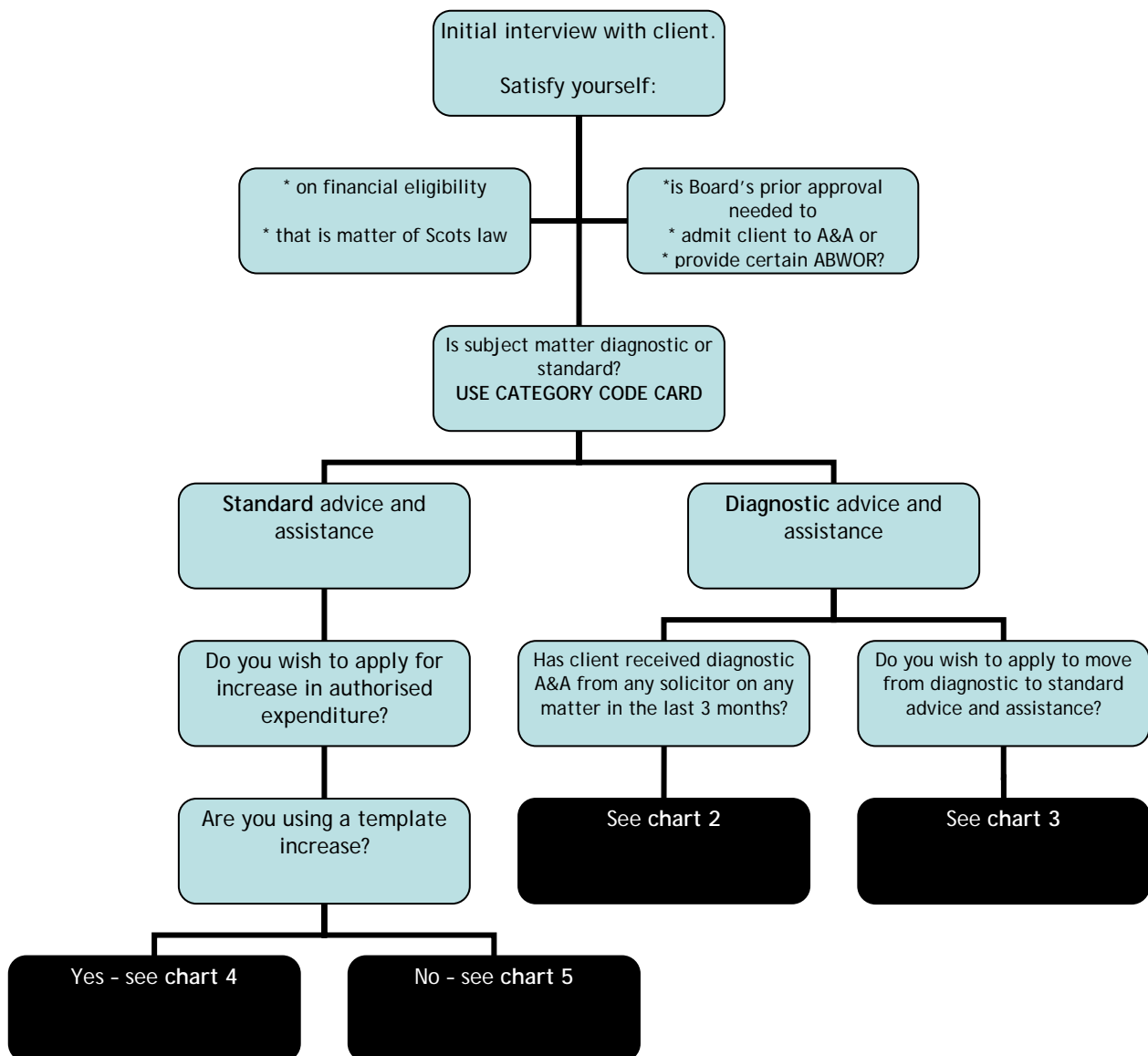
# Flowcharts

The flowcharts in this section will help explain how elements of the new civil advice and system work.

The flowcharts cover:

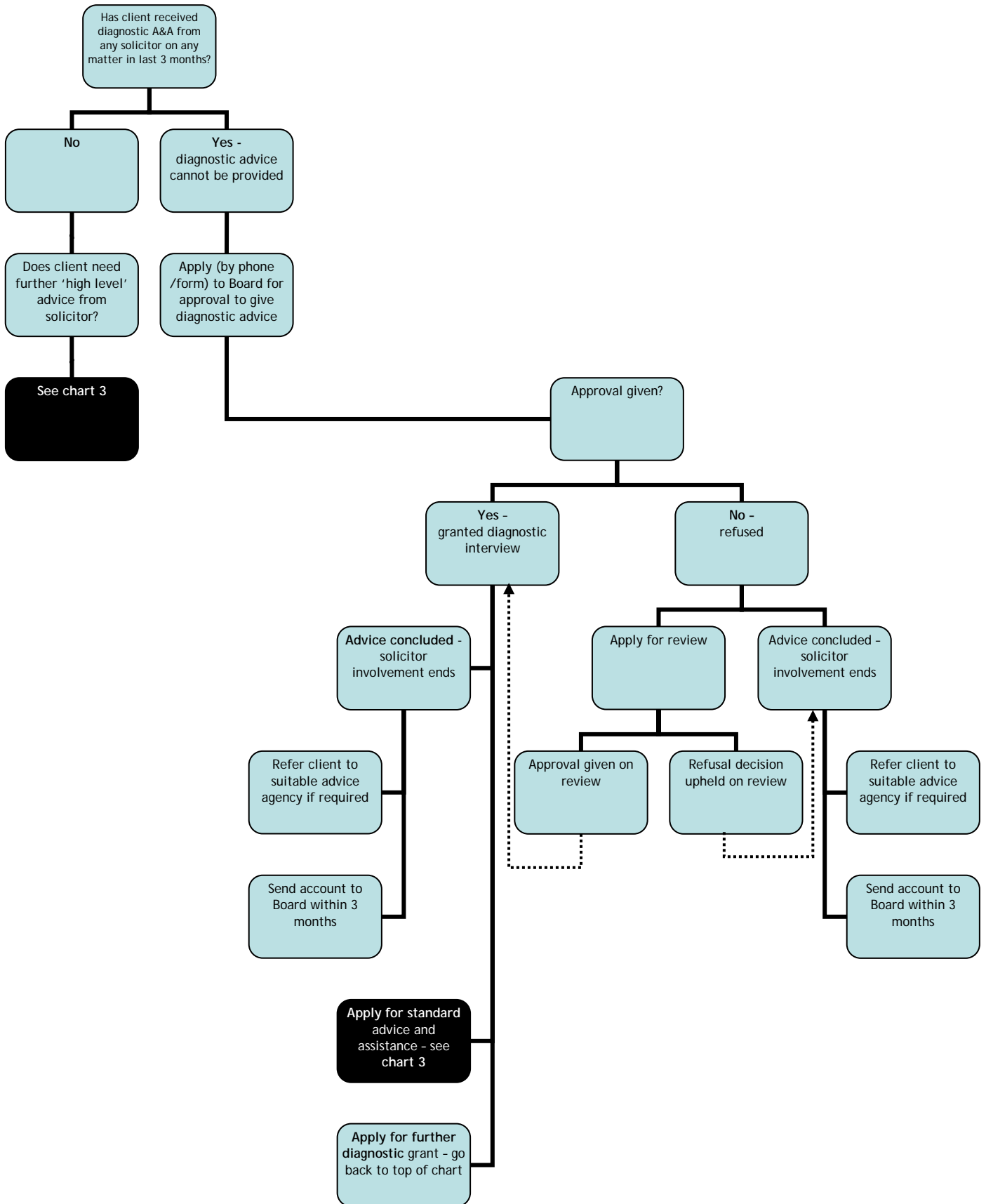
- Chart 1 - Civil advice and assistance overview
- Chart 2 - Diagnostic advice and assistance (Has your client already received diagnostic advice and assistance from any solicitor on any matter within past 3 months?)
- Chart 3 - Moving from diagnostic to standard advice and assistance
- Chart 4 - Standard advice and assistance - applying for an increase using a template
- Chart 5 - Standard advice and assistance - applying for an increase that does not use a template

## Chart 1 - Civil advice and assistance overview

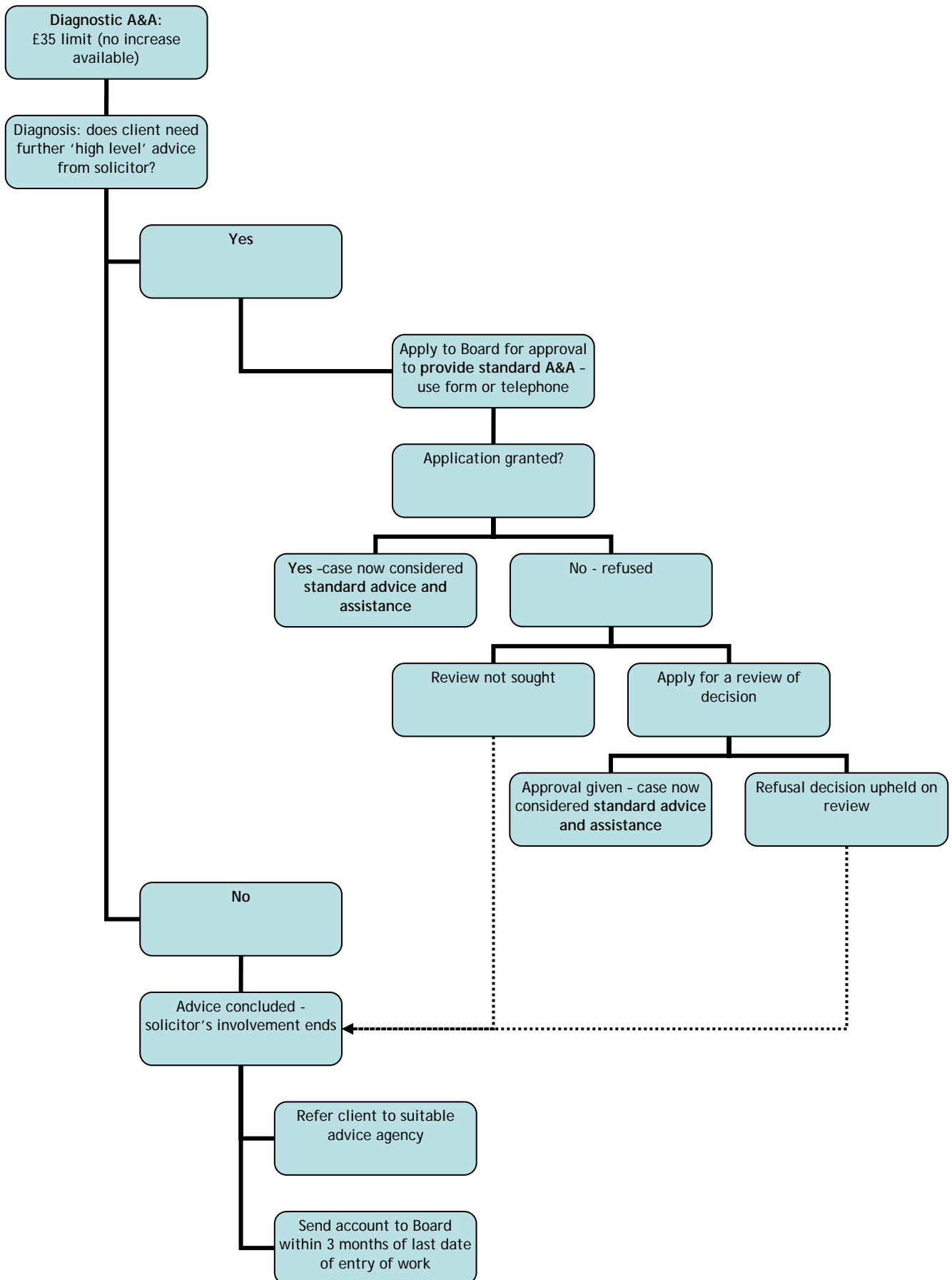


## Chart 2 - Diagnostic advice and assistance

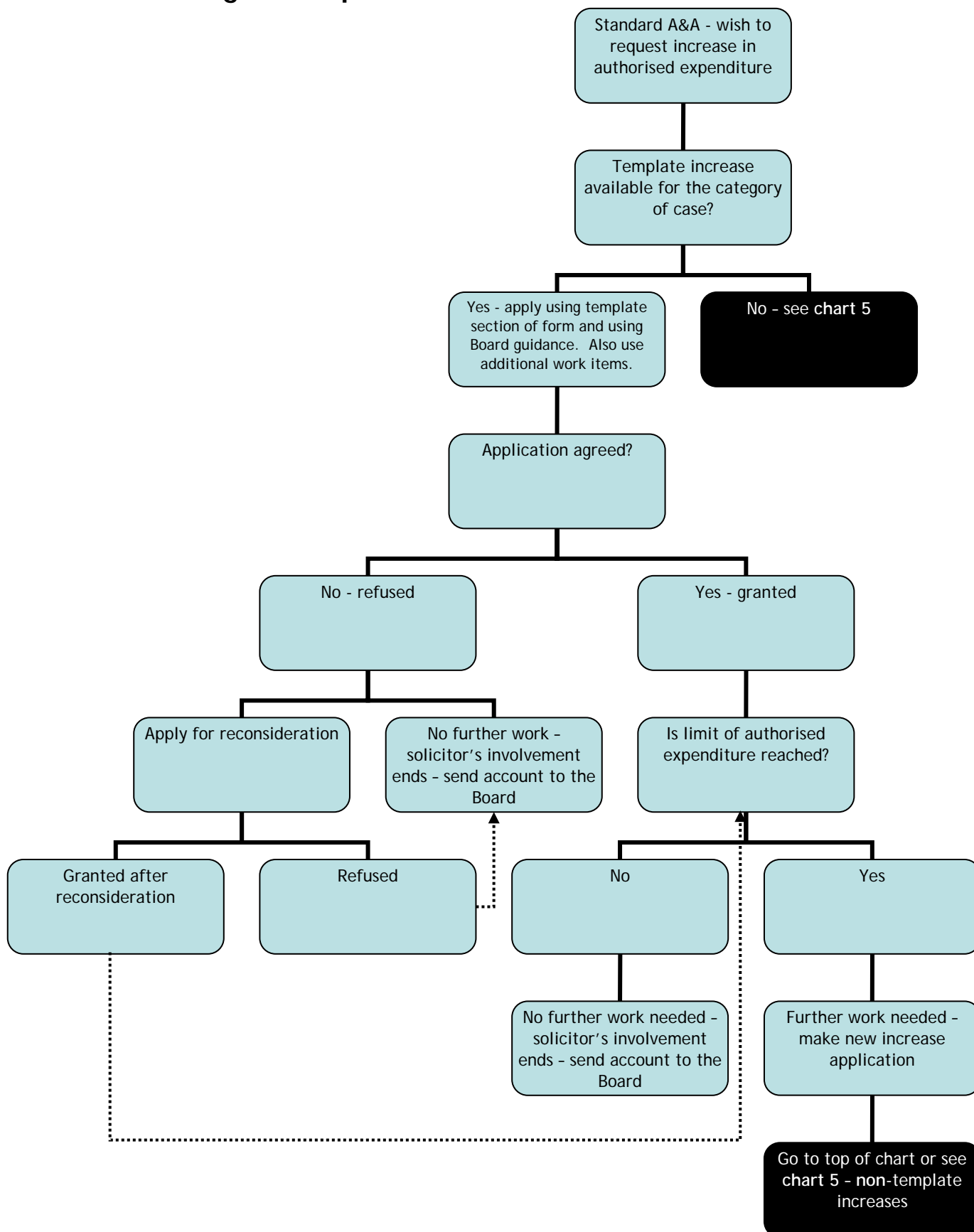
Has your client already received diagnostic advice and assistance from any solicitor on any matter within past 3 months?



# Chart 3 - Moving from diagnostic to standard advice and assistance



## Chart 4 - Standard advice and assistance - applying for an increase using a template



## Chart 5 - Standard advice and assistance - applying for an increase that does not use a template

